

# Field Expeditions



These workshops combine artistic and cultural adventures in an international "classroom." Whether cruising down a river in France, sitting in the Tuscan countryside or rafting through the Grand Canyon, these expeditions offer inspiration and education on a grand scale. Workshops are facilitated by instructors who are recognized experts in their fields.



## MONUMENT VALLEY

PHOTO EXCURSION WITH IAN WHITEHEAD

SEPT 26,27,28 2008 OR MAY 8,9,10 2009

Join landscape photographer Ian Whitehead on a journey to some of the most spectacular locations within the Navajo Nation. Experience the dancing light off the convoluted and twisted walls of Antelope Canyon - possibly the world's most photographed slot! Then we'll head to Monument Valley to shoot the setting sun and long shadows of these famous buttes. On day two, a Navajo guide takes us into otherwise restricted areas of Monument Valley. Then after a thrilling 4x4 ride up to Hunts Mesa - a breathtaking overlook above Monument Valley, there will be time to catch the changing light - both at sunset and again at sunrise.

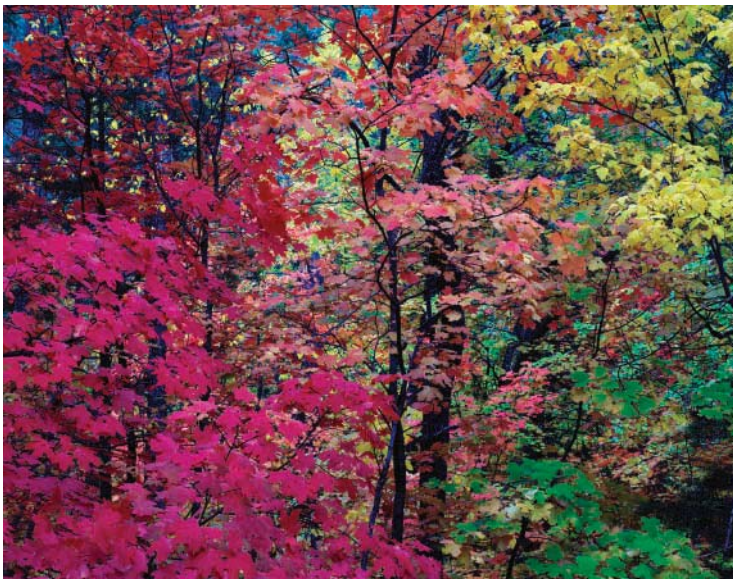
[www.ian-whitehead.com](http://www.ian-whitehead.com)

COST: \$995 per person

DEPOSIT: \$500 per person

BALANCE DUE: 30 days before the workshop

INCLUDED: Workshop, all entrance fees, dinner and breakfast on Hunts Mesa, all camping supplies, transportation to and from Sedona, hotel (dble occ.) in Kayenta on day one.



## SEDONA ANTELOPE CANYON

PHOTO EXCURSION WITH IAN WHITEHEAD

OCT 18 & 19 2008 OR APRIL 18 & 19 2009

TUITION: \$ 395

Explore the beauty of stunning red rock vistas & lush canyons of Sedona and the world famous sandstone curves of Antelope Canyon. Saturday morning meeting at 10:00 am includes a portfolio review and discussion of locations, field technique and composition, then shooting Oak Creek Canyon & Red Rock Crossing. Sunday the class will leave early to insure perfect light in Antelope Canyon, one of the world's most beautiful slot canyons. Transportation included. See Ian's large format film photos and work from locations on this trip at his website.

[www.ian-whitehead.com](http://www.ian-whitehead.com)



## PAINTING THE LANDSCAPE OF TUSCANY

RANDALL SEXTON AND MARCIA BURTT

SEPT 13 - 20 2008 COST - \$ 2050 4 SPOTS LEFT !

ROBERT BURRIDGE

SEPT 19 - 26 2009 WAIT LIST ONLY !

MICHAEL SCHLICHTING AND BETSY DILLARD STROUD

SEPT 11 - 18 2010 ASK ABOUT OUR EARLY BIRD SPECIAL !

Between Sienna, Florence and San Gimignano, in the heart of the Tuscan countryside, sits the beautiful Villa Fattoria Bacio. The villa is the perfect blend of old world 'rustica' and catered comfort, surrounded on all sides by spectacular views of the meandering hills of Tuscany. The hilltop views from the villa are perfect for plein air painting with options for intimate garden and villa scenes or views of the surrounding landscape. Lodging at the villa, genuine Tuscan meals and fine wine are included. Side trips to nearby towns can be easily arranged. Instructors are world class experts in their style and medium. Each instructor's class is a unique way of engaging with Tuscany. See the Arts Center's website for individual descriptions and find the perfect workshop for your immersion into the heart of Tuscany.

Deposit: \$500 per person

Balance: Due 90 days before the workshop.

Included: Lodging is for Saturday afternoon through Saturday morning (dble occ. with shared bath, some singles/private bath available ), breakfasts and dinners, welcome meal and Grand Finale Dinner, traditional Tuscan cooking. Ground transportation is included to and from Certaldo daily and is provided at arrival and departure between the villa and the Certaldo train station.



## POWER PAINTING IN NEW YORK CITY

LESSONS FROM THE OLD MASTERS FOR OUR TIME

MORTON KAISH, N.A.

MAY 18 - 22 2009

Artists and historians have long speculated on how the Old Masters might have painted if they had lived in the 21st Century. We'll travel back in time to examine what they did and how they did it -- and forward, with a look at contemporary concepts and methods, to create what might have happened today. Using both oil and acrylics, in a structured step-by-step approach, this workshop offers beginning and advanced students an opportunity for imagination to join with experimentation to create images both dramatic and personal. (Pictured above: "Two Brides," by Morton Kaish)

Cost: \$850 per person

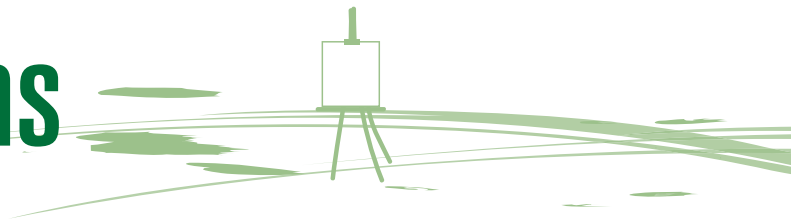
Deposit: \$500 per person

Balance: \$350 per person (due Feb 18 '09)

Included: Workshop will take place at the prestigious National Academy of Design in New York City with nearby access to the Guggenheim and the Metropolitan Museums. Using live models as well as reproductions of old master works, guided instruction will take place from 9 - 1, the studio will be available in the afternoons for working or students can explore the city and its art.

Not Included: Lodging, meals & travel expenses - note that lodging in New York City is best arranged well in advance and that the week of this workshop is a particularly busy week for the hotels as it is a university graduation week. See this workshop on our website for links, suggestions and options for lodging.

# Field Expeditions



## PAINTING DOWN THE CANYON

PLEIN AIR PAINTING IN THE GRAND CANYON

DAVID HASKELL

MAY 5 - 13 2009

Paint the morning and afternoon light as it casts its warm glow through towering canyon walls and reflects off the river. This 220-mile Colorado River painting trip down the Grand Canyon has been custom-designed especially for plein air artists. Camping locations are selected for an inspiring array of compositions with mid-day rafting hours taking you from one extraordinary painting site to the next. This trip is coordinated by professional artist, David Haskell, whose love of painting the canyon has been a life-long passion. [www.dhaskellart.com](http://www.dhaskellart.com)

COST: \$2800 per person

DEPOSIT: \$500 per person

BALANCE: \$2300 per person - due March 5, 2009

Included: Workshop, all meals, rafting trip, ground transportation from Flagstaff to take-in and take-out point, overnight stay and dinner at Marble Canyon Lodge before morning departure.



## HAVASUPAI AND GRAND CANYON

FROM SEDONA TO SHANGRI LA

PHOTOGRAPHIC FIELD EXPEDITION WITH IAN WHITEHEAD

MAY 1 - 4 2009 **ASK ABOUT OUR EARLY BIRD SPECIAL !**

Nestled 3,000 feet deep into the NE corner of the Grand Canyon lies another world accessible only by foot, horseback, or helicopter - Havasu Canyon - known world-wide for its turquoise waters, spectacular series of towering waterfalls, travertine ledges, and its native namesakes - the "People of the Blue-Green Water". From our primitive base camp below 100 ft tall Havasupai Falls, we'll have plenty of time to journey both up and down the canyon to explore lands forgotten by time - including (for the adventurous) an exciting descent through travertine down to the base of majestic 200-foot-high Mooney Falls.

COST: \$1200 per person

DEPOSIT: \$500 per person

BALANCE: \$700 per person - due April 1, 2009

Included: Workshop with professional photographer Ian Whitehead, transportation from Sedona, helicopter ride in and out of Supai, transport of all gear to campsite and back via pack horses, all camping and associated fees for two nights of camping. Not included - Lodging in Sedona the night before departure, Meals (camping/backpacking type of food must be brought in to cover meals in the canyon).

[www.ian-whitehead.com](http://www.ian-whitehead.com)



## AN ARTISTIC IMMERSION IN ANTIGUA

PHOTOGRAPHY, WATERCOLOR AND CULTURAL IMMERSION IN GUATEMALA

WITH SUZANNE CLEMENZ AND DON AND KAREN SCHAIRER

JUNE 11 - 18 2009 **ASK ABOUT OUR EARLY BIRD SPECIAL !**

Don and Karen Schairer have led numerous groups to Guatemala and the environs of Antigua. Students can sign up for the photography workshop with Suzanne Clemenz (workshop instructor and noted photographer for *Arizona Highways Magazine*) and take many trips around the area with each day a different adventure. Or choose the watercolor workshop with Don Schairer moving at a pace that will allow for quiet contemplation and artistic absorption of each unique spot. Both groups will benefit from Karen Schairer's command of the language and intimate knowledge of the area. Side trip options abound and students from both workshops will share wonderful stories and experiences in the evenings.

COST: \$1900 per person

DEPOSIT: \$500 per person

BALANCE: \$1400 per person - due Mar 11 '09

INCLUDED: Workshops, lodging (dble occ.), breakfast, all ground transportation during workshop and to and from the airport in Guatemala City.



## PLEIN AIR PAINTING IN CANYONLANDS

DAVID HASKELL

SEPT 27 - OCT 2 2009 **ASK ABOUT OUR EARLY BIRD SPECIAL !**

Raft down the Green and Colorado Rivers through Canyonlands National Park and capture the tranquility of this spectacular setting. This 6 day plein air painting expedition has been designed specifically for artists. Camping locations are chosen to place artists near side canyons, cottonwood groves and vistas of the surrounding canyon cliffs above. Morning and afternoon painting sessions allow rafting to be done in the mid-day. The trip is coordinated by professional artist David Haskell, who has made painting canyon country rivers a major focus of his art career. The trip is outfitted and guided by Moki Mac River Expeditions, a licensed National Park Concessionaire. [www.dhaskellart.com](http://www.dhaskellart.com)

COST: \$2000 per person

DEPOSIT: \$500 per person

BALANCE: \$1500 per person - due June 30, 2009

INCLUDED: Lodging at Green River City September 26 and October 2, Flight from Green River City to Mineral Bottom September 27, Rafting trip, All meals on the river, sleeping gear and tents, ground transportation back from Hite Utah to Green River City on final day.

*“Mystery is at the heart of creativity. That, and Surprise.”*

– Julia Cameron